

An aerial photograph of an industrial facility, likely a water treatment plant, featuring several large circular tanks and various buildings. The facility is surrounded by a mix of trees and residential housing. The image is in grayscale and serves as a background for the text.

# **PFAS in North Kent County**

## **House Street PFAS Plumes & Geology**

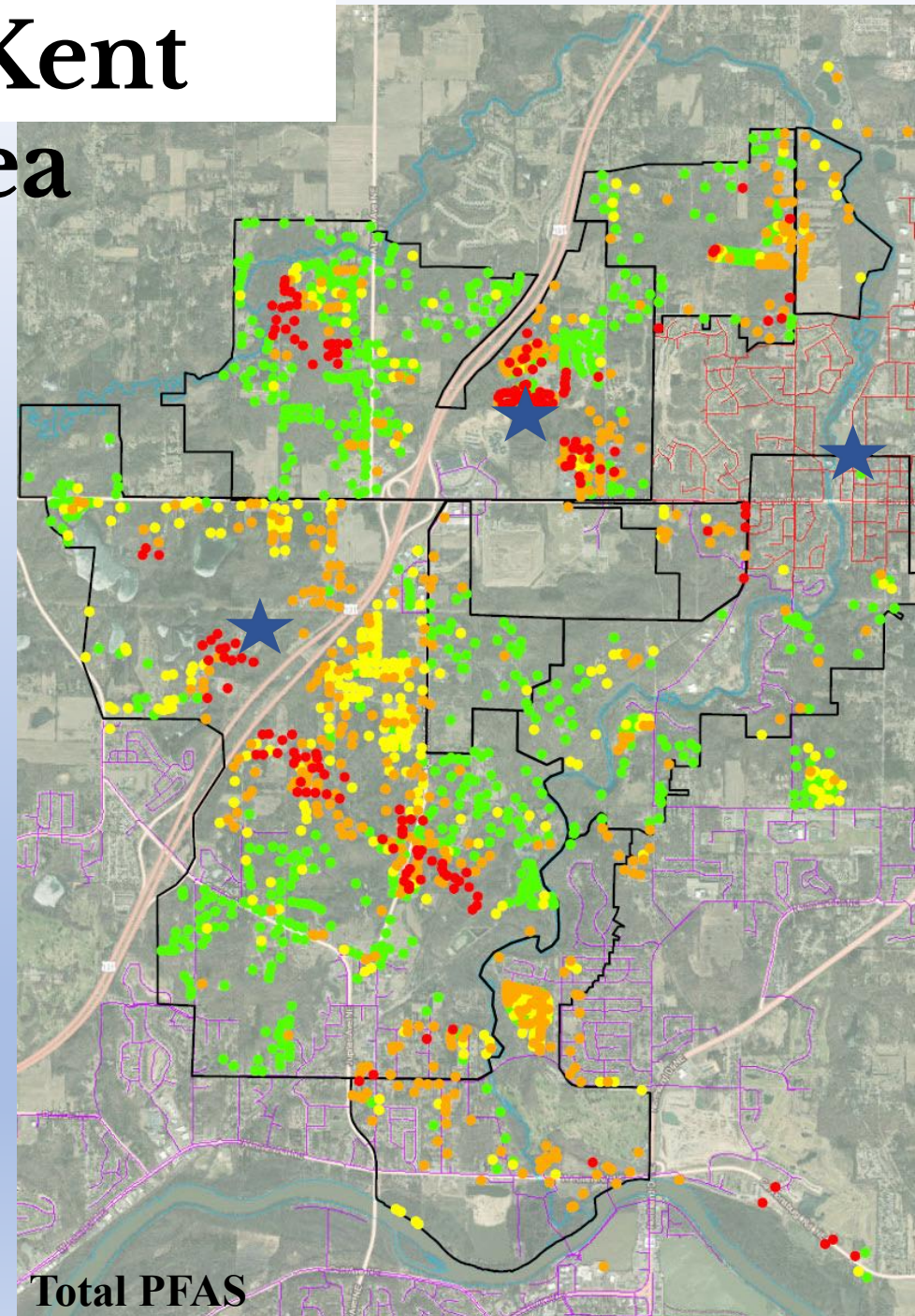
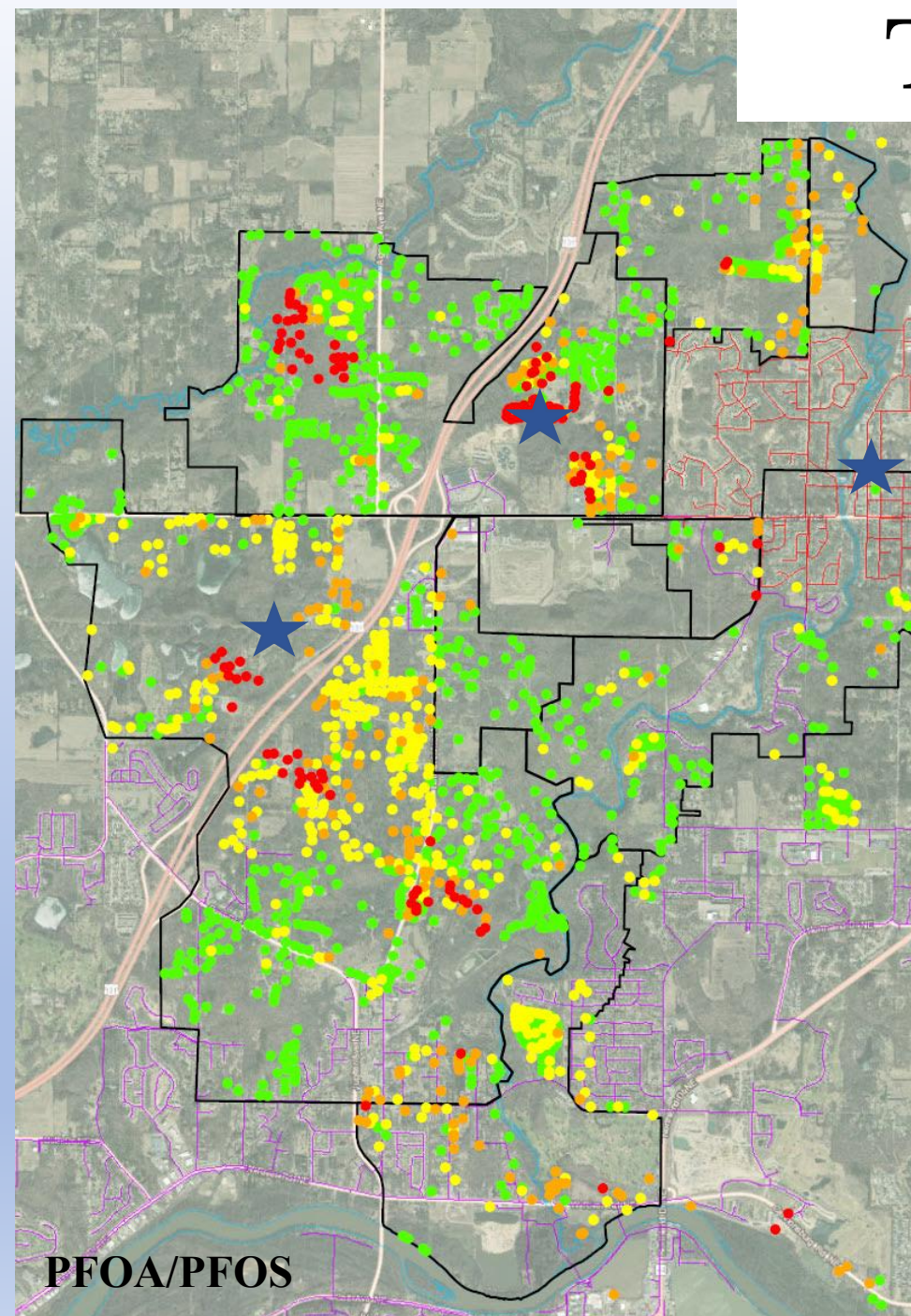
**Wolverine CAG- December 19, 2019**



# The North Kent

## Study Area

- Over 10 Square Miles
- 1720 Residential Wells Sampled
- 938 Residential Wells with PFAS Detection
- 124 residential wells over 70ppt PFOA/PFOS
- 24 residential wells over 1,000 ppt for PFOA/PFOS (up to 96,000 ppt)
- 538 Whole-House Filters Installed





# House Street Disposal



Waste materials disposed of in unlined trenches, ponds, lagoons and into lowlands/ravines

1965 USGS

- Early 1940s - Disposal by WWWW started on House Street
- 1964 - WWWW purchases the property
- 1966 – Site becomes licensed disposal facility
- 1970 – Site ceases to be in active use as disposal site
- 1978 – License as solid waste disposal area surrendered
- 2018 – Drilling for EPA indicates at least 30-40 acres of was



Waste material on the MDOT property



**Lithology:**



Clay



Silt



Sand



Till



Gravel & Sand



Bedrock

**PFAS:**



Surface Water



Groundwater



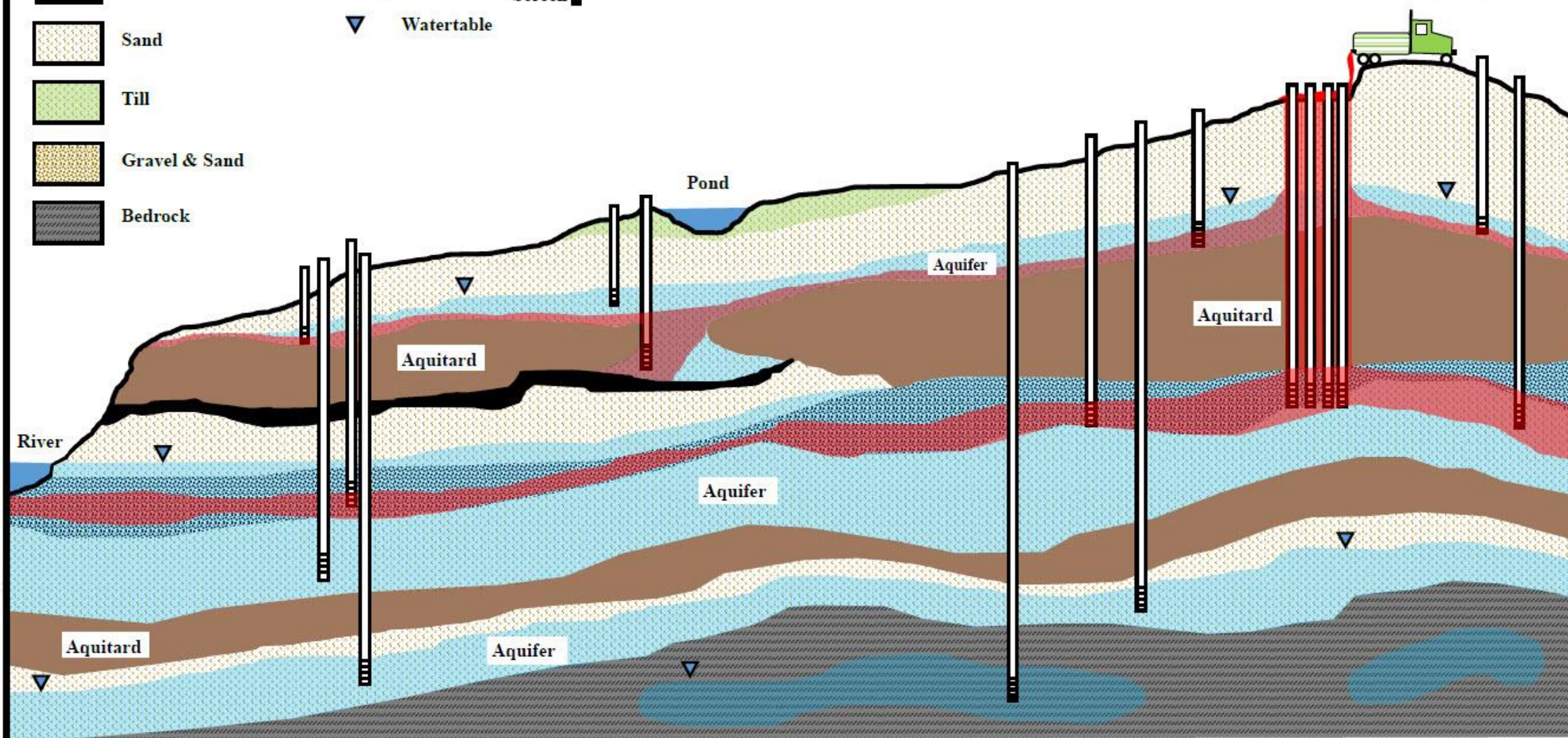
Watertable

**Water:**

Drinking Water  
Well

Screen

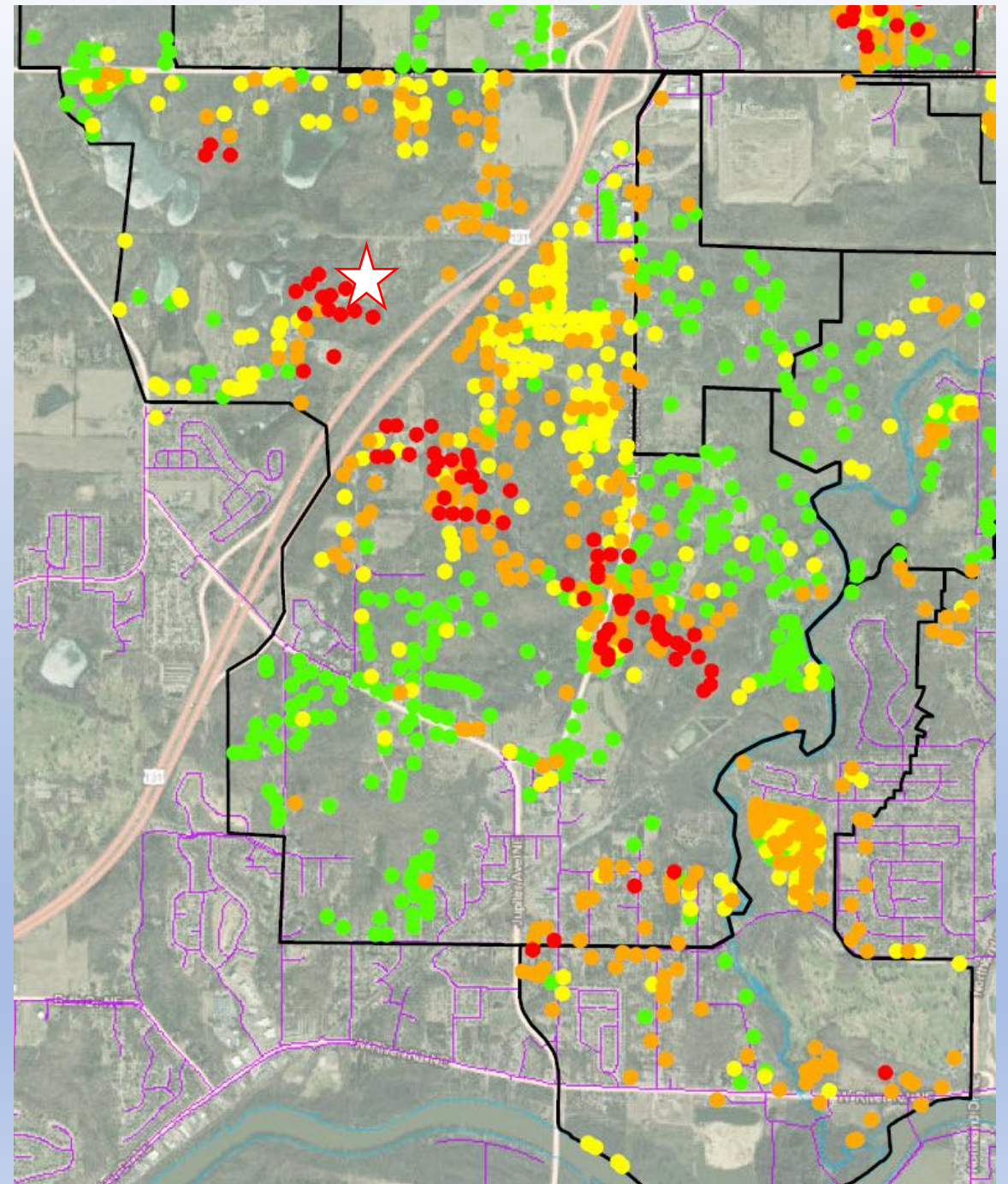
Source Area from Historical  
Surficial Dumping



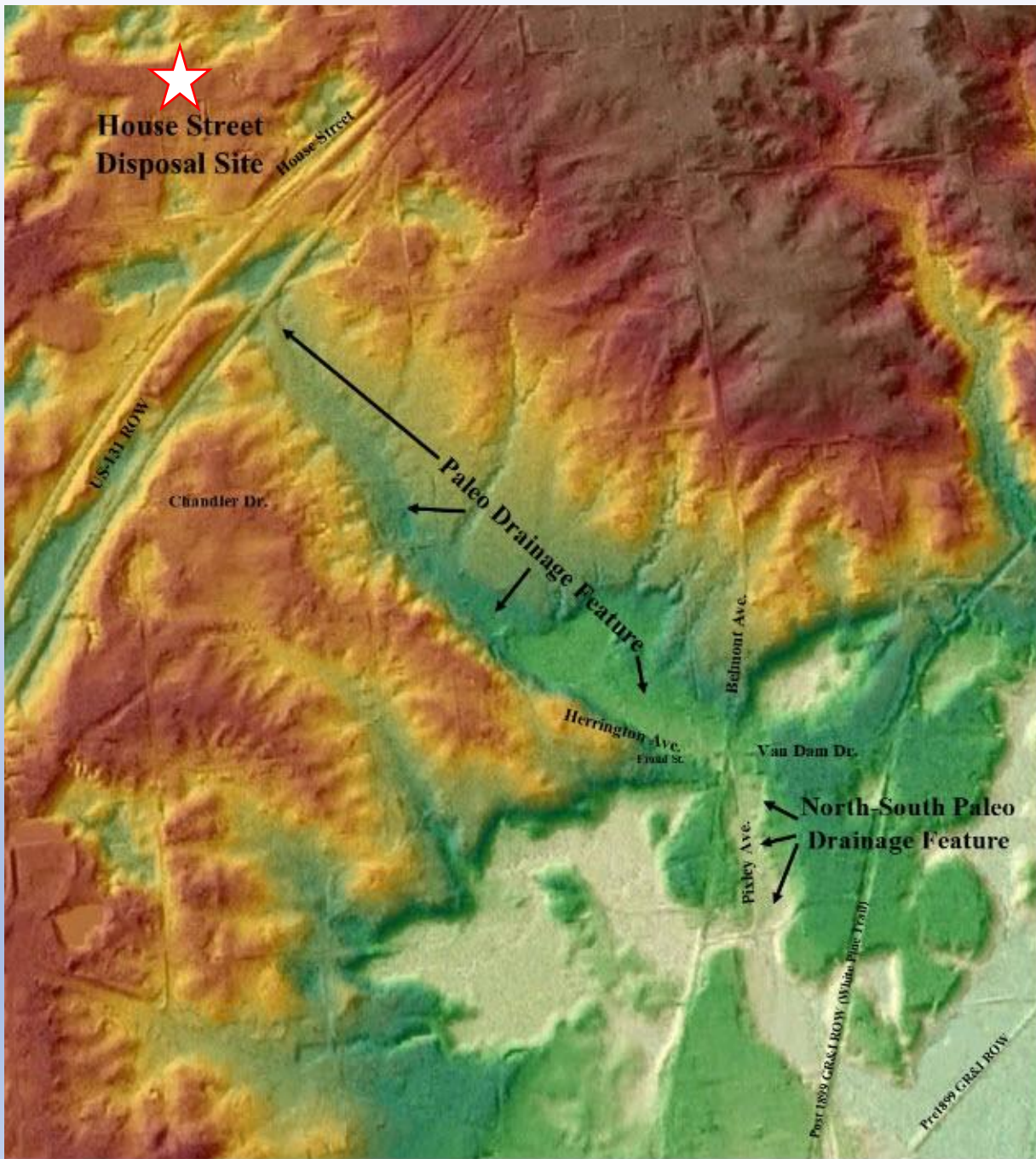


# House Street Disposal Area

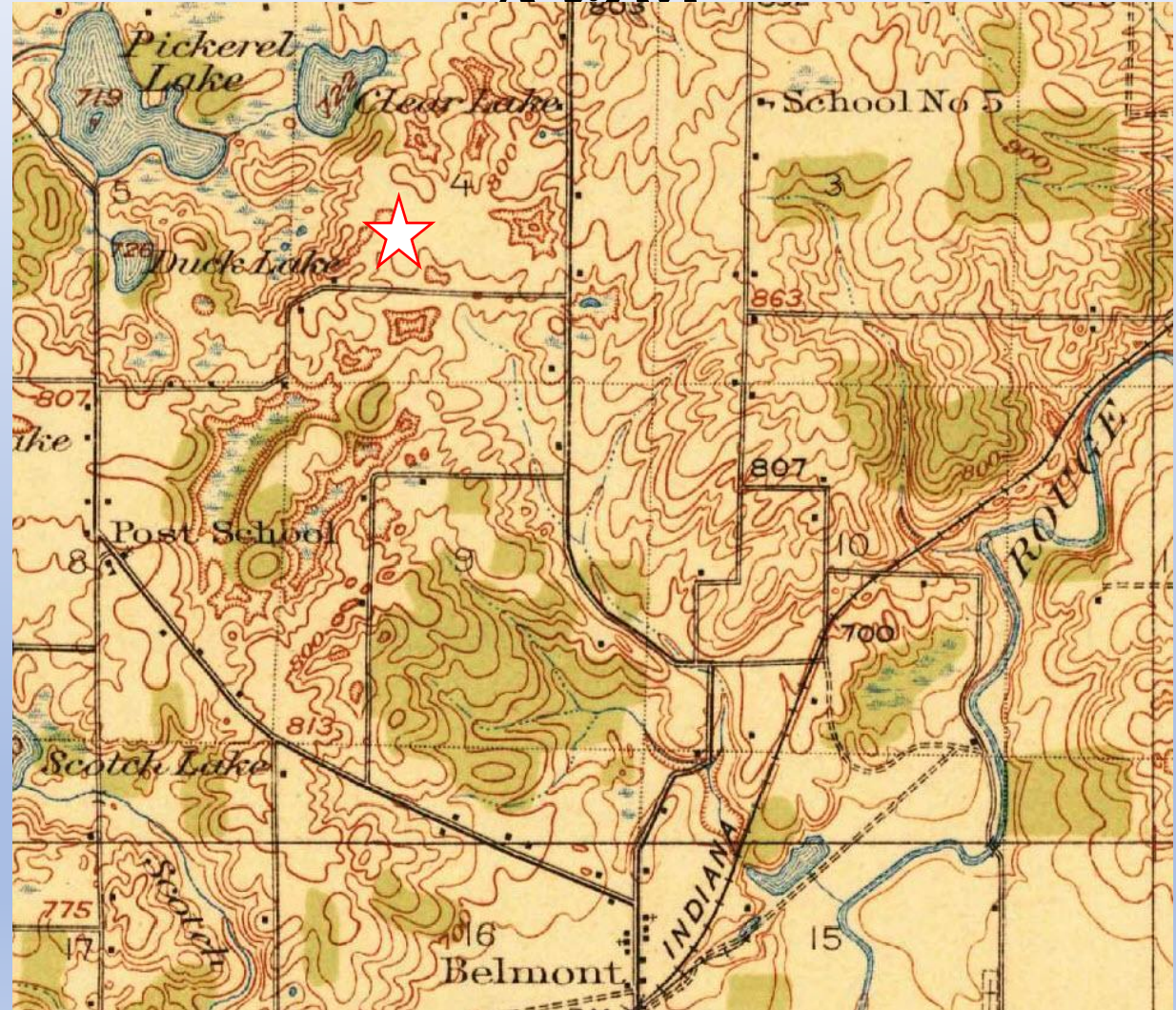
- Drinking Water wells over 70ppt PFOA/PFOS: 39
- Drinking Water wells over 1,000 ppt for PFOA/PFOS: 5
- Drinking Water well's highest concentration: 96,000 ppt
- On groundwater divide with flow in multiple directions; Rogue River encircles area
- Basic House Street Disposal Area geology: surficial clay underlain by sand to 175'; depth to first impacted aquifer approximately 60'







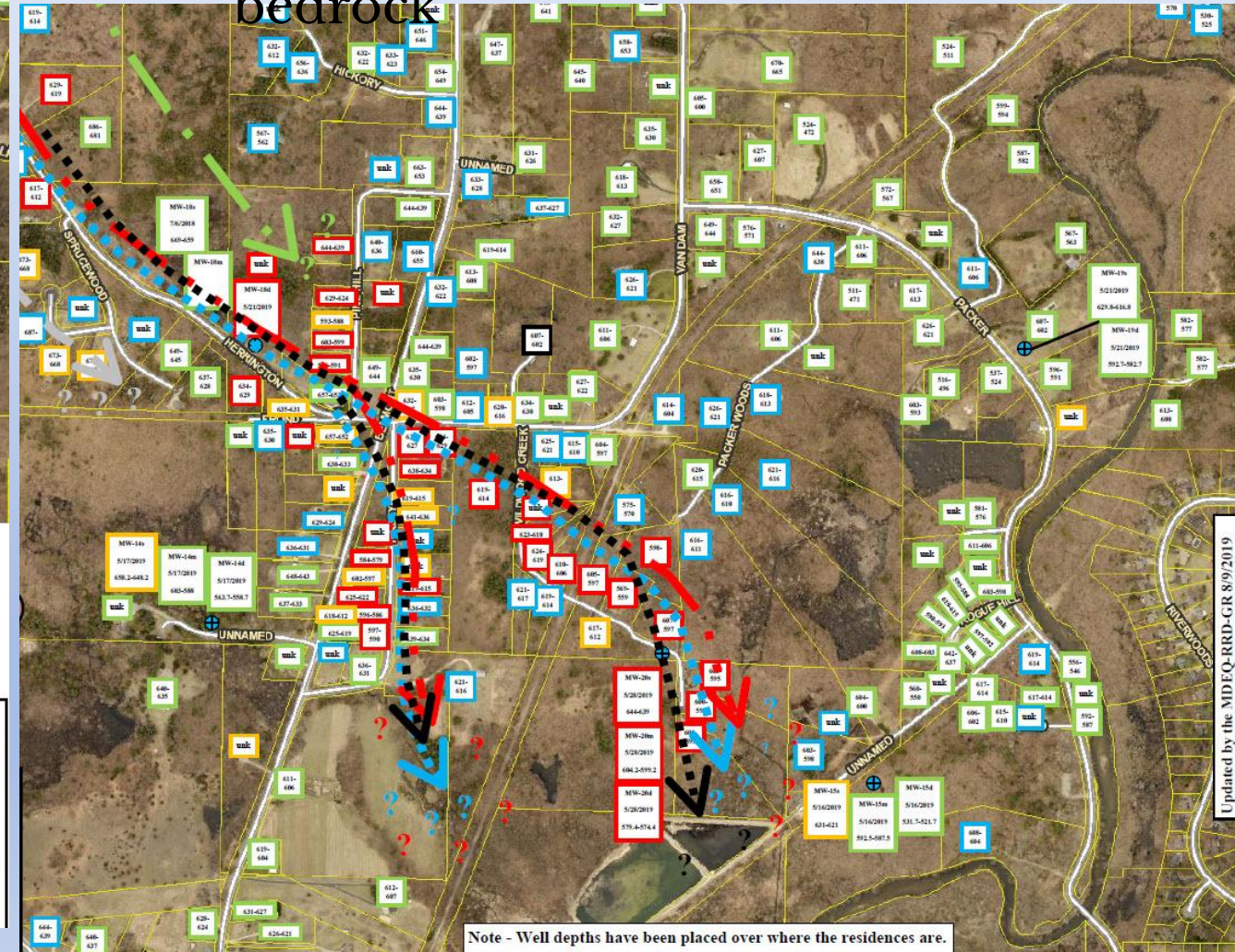
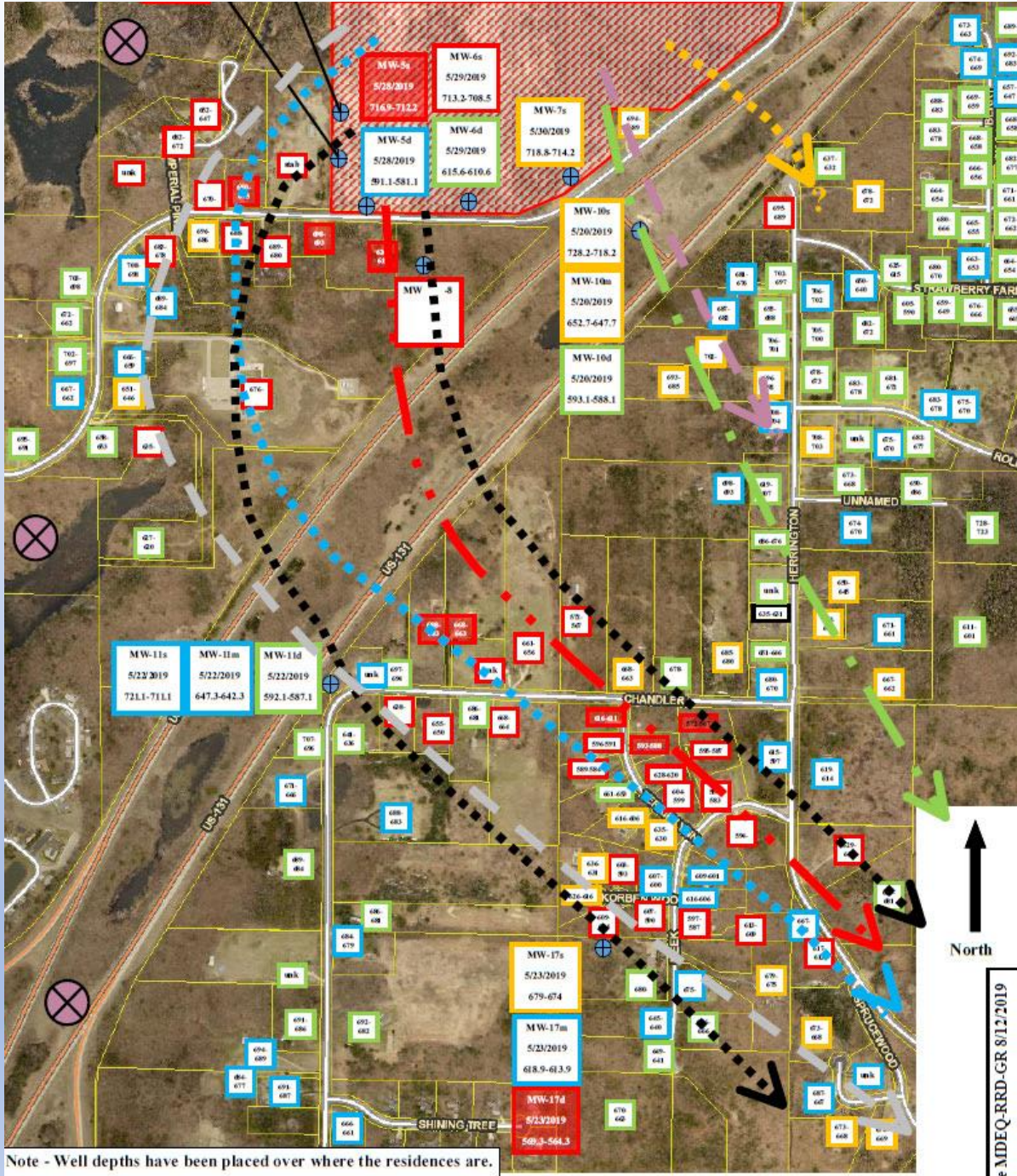
# House Street Disposal Area





# House Street Disposal Area

- Principle House Street Plumes: possibly several plumes
- High concentrations on top of bedrock

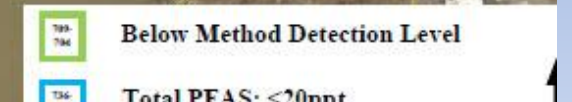




- Lack of monitor wells hinders plume definition closer to the river





[illegible]



# House Street Disposal Area

- Plume to the northwest is not delineated





# Questions?

For more information on Wolverine investigations visit  
the Michigan PFAS Action Response Team (MPART)  
website at

[www.michigan.gov/belmont](http://www.michigan.gov/belmont)

[www.Michigan.gov/rockfordtannery](http://www.Michigan.gov/rockfordtannery)

