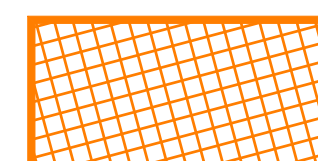


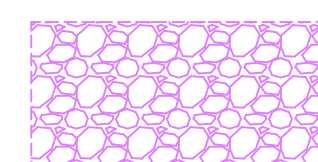



TURNING POINT COORDINATE INFO FOR EXCAVATION AREAS

	TURNING POINT ID	"X" COORD.	"Y" COORD.	GRADE EL.	REMARKS
EXCAVATION AREA (N1)	N1-1				NE CORNER
	N1-2				
	N1-3				
	N1-4				
	N1-5				
	N1-6				
EXCAVATION AREA (N2)	N2-1				NE CORNER
	N2-2				
	N2-3				
	N2-4				
	N2-5				
	N2-6				
	N2-7				
	N2-8				
	N2-9				
	N2-10				

("X" & "Y" COORDINATES FOR TURNING POINTS OF EXCAVATIONS TO BE DETERMINED)

LEGEND

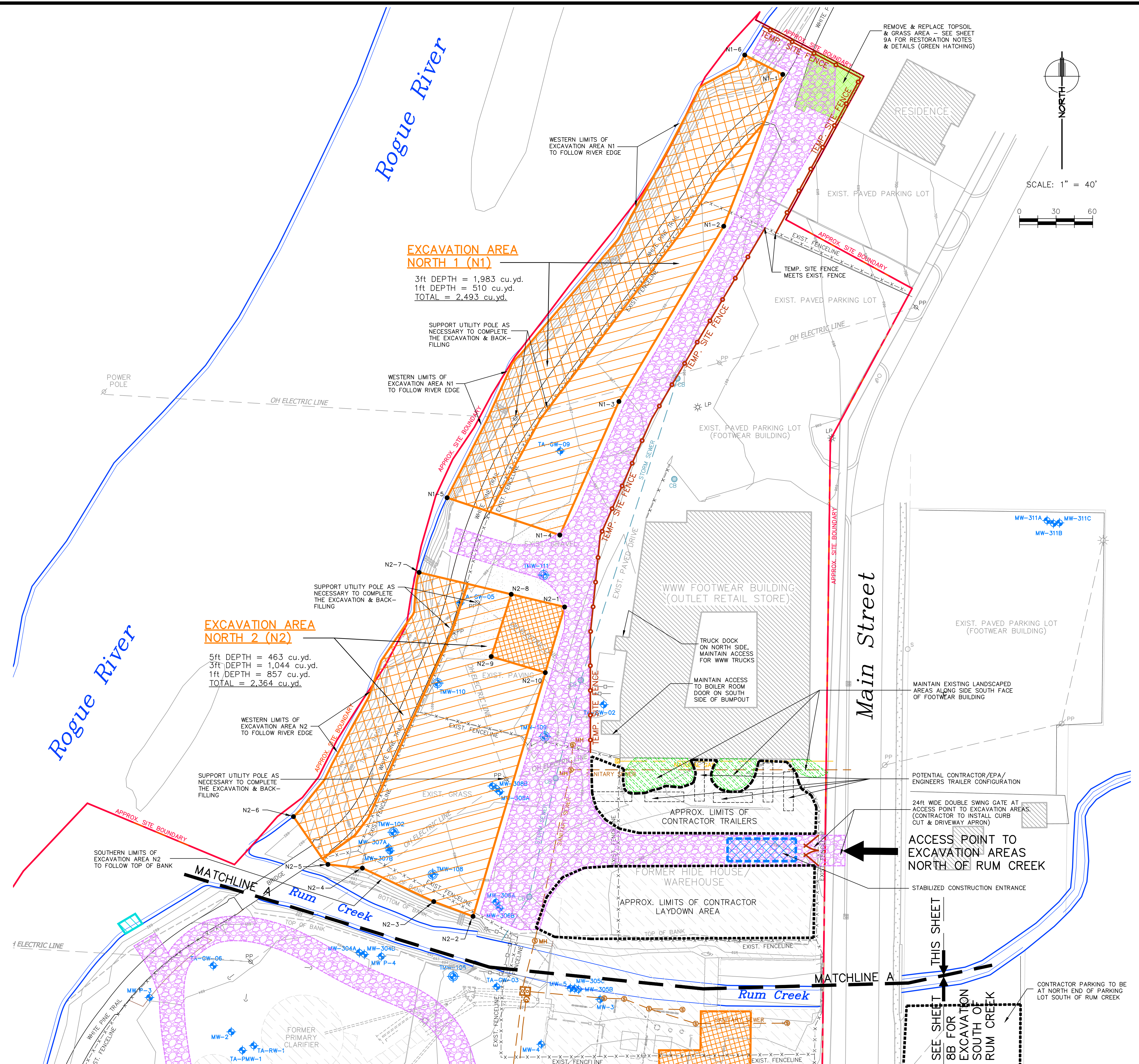
-  = INDICATES LIMITS OF SOIL/LEATHER/HIDE EXCAVATION TO 5ft DEPTH
-  = INDICATES LIMITS OF SOIL/LEATHER/HIDE EXCAVATION TO 3ft DEPTH
-  = INDICATES LIMITS OF SOIL/LEATHER/HIDE EXCAVATION TO 1ft DEPTH
-  = INDICATES MAXIMUM LIMITS OF ACCESS ROAD - CONTRACTOR TO CONSTRUCT AS NEEDED. (MAIN ENTRANCE ROAD TO SITE IS SHOWN 35ft WIDE, ALL OTHERS ARE SHOWN 20ft WIDE WITH 50ft MIN. INSIDE TURNING RADIUS)

- NX-Y ● = TURNING POINT (TYP.) FOR LAYOUT OF LIMITS OF EXCAVATION
-  = EXIST. MONITORING WELL LOCATION

-  = INDICATES APPROX. ROUTING OF EXCAVATION SITE FENCING

NOTES

- 1) REMOVE & REPLACE ALL FENCING THAT OCCURS WITHIN THE LIMITS OF EXCAVATION AREAS
- 2) PROTECT ALL MONITORING WELLS THROUGHOUT EXCAVATION (SOME ARE FLUSH MOUNT WELLS, WHILE SOME ARE PRO-COVERS STICKING UP 3ft ABOVE GRADE)
- 3) WHERE FORMER BUILDINGS/STRUCTURES WERE, EXCAVATION CONTRACTOR MAY ENCOUNTER BROKEN CONCRETE FLOOR SLABS BELOW GRADE AS WELL AS EXISTING CONCRETE FOUNDATIONS & FOOTINGS



FORMER TANNERY SITE PLAN - EXCAVATION LIMITS (NORTH OF RUM CREEK)

ISSUED FOR BID - NOT FOR CONSTRUCTION

DRAWN BY	KJB
DESIGN BY	LMN
DATE	8/28/14
FILE NO.	6233501_M_04
NO.	
REVISIONS	
BY	
DATE	
NO.	

**WOLVERINE WORLD WIDE/
WARNER, NORCROSS and JUDD
FORMER TANNERY SITE, 123 MAIN ST, ROCKFORD, MI
REMEDIAL ACTION**

ROSE & WESTRA
A DIVISION OF GZA
Grand Rapids, Michigan
GEOTECHNICAL-ENVIRONMENTAL-ECOLOGICAL-WATER-CONSTRUCTION MANAGEMENT

PROJECT NO.
16.0062335.01

SHEET NO.
8A