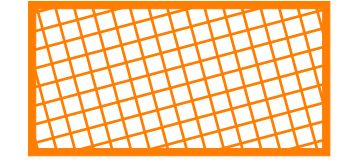
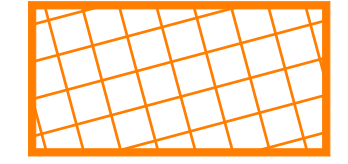
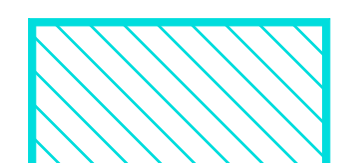
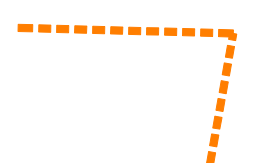
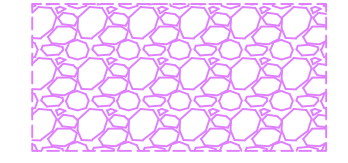
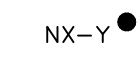




TURNING POINT COORDINATE INFO FOR EXCAVATION AREAS					
	TURNING POINT ID	"X" COORD.	"Y" COORD.	GRADE EL.	REMARKS
EXCAVATION AREA (S1)	S1-1				
	S1-2				
	S1-3				
	S1-4				
	S1-5				
	S1-6				
	S1-7				
EXCAVATION AREA (S2)	S2-1				
	S2-2				
	S2-3				
	S2-4				
EXCAVATION AREA (S3)	S3-1				
	S3-2				
	S3-3				
	S3-4				
EXCAVATION AREA (S4)	S4-1				
	S4-2				
	S4-3				
	S4-4				
	S4-5				
	S4-6				
EXCAVATION AREA (S5)	S5-1				
	S5-2				
	S5-3				
	S5-4				
	S5-5				
	S5-6				
	S5-7				
	S5-8				
EXCAVATION AREA (S6)	S6-1				
	S6-2				
	S6-3				
	S6-4				

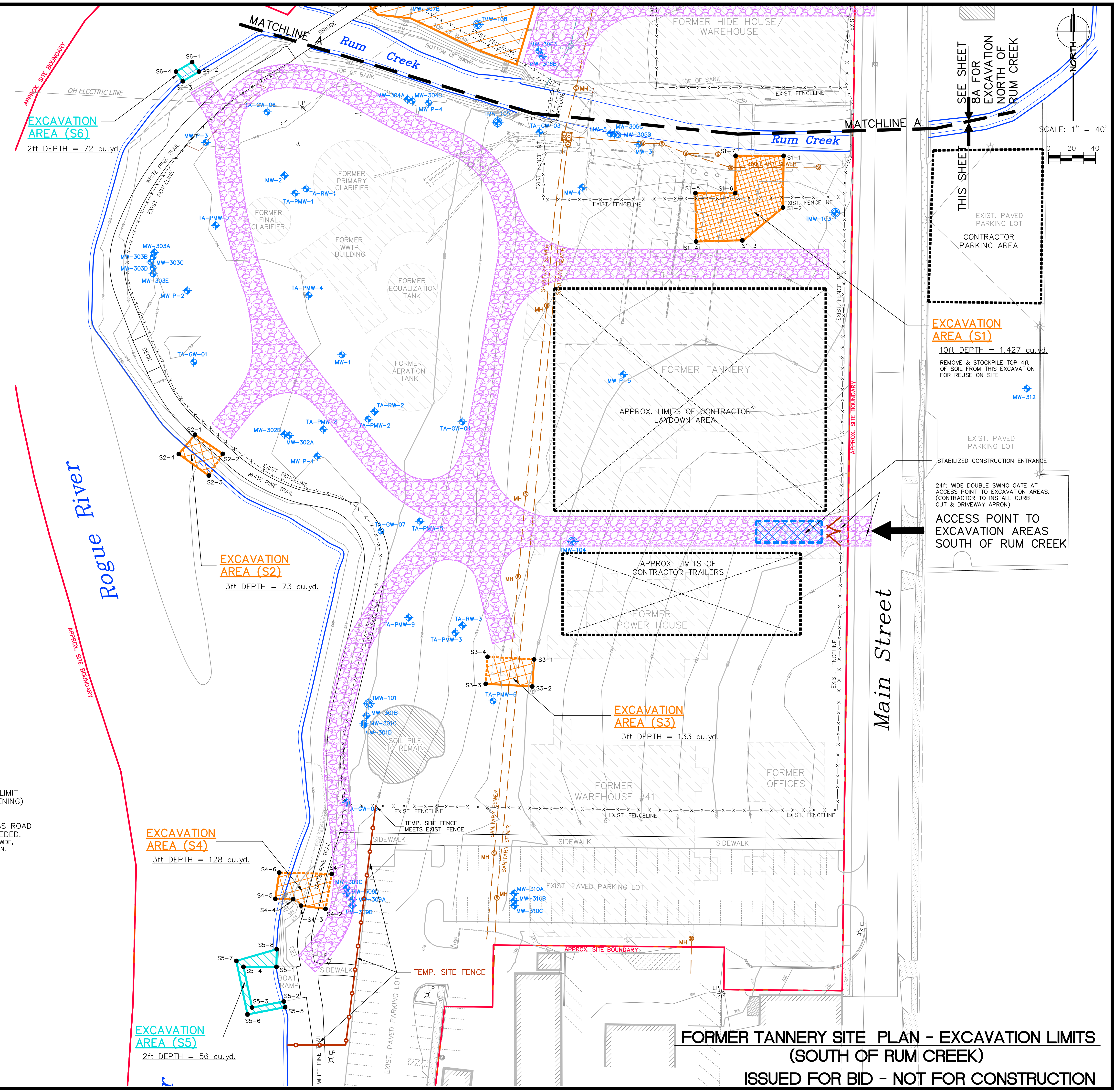
(*X" & "Y" COORDINATES FOR TURNING POINTS OF EXCAVATIONS TO BE DETERMINED)

LEGEND

-  = INDICATES LIMITS OF SOIL EXCAVATION TO 10ft DEPTH
-  = INDICATES LIMITS OF SOIL EXCAVATION TO 3ft DEPTH
-  = INDICATES LIMITS OF SEDIMENT EXCAVATION TO 2ft DEPTH
-  = INDICATES ASSUMED LIMITS OF SOIL EXCAVATION TO 3ft DEPTH (ACTUAL LIMIT WILL BE DETERMINED W/ FIELD SCREENING)
-  = INDICATES MAXIMUM LIMITS OF ACCESS ROAD - CONTRACTOR TO CONSTRUCT AS NEEDED. (MAIN ENTRANCE ROAD TO SITE IS SHOWN 35ft WIDE, ALL OTHERS ARE SHOWN 20ft WIDE WITH 50ft MIN. INSIDE TURNING RADIUS)
-  = TURNING POINT (TYP.) FOR LAYOUT OF LIMITS OF EXCAVATION
-  = EXIST. MONITORING WELL LOCATION
-  = INDICATES APPROX. ROUTING OF EXCAVATION SITE FENCING

NOTES

- 1) REMOVE & REPLACE ALL FENCING THAT OCCURS WITHIN THE LIMITS OF EXCAVATION AREAS
- 2) PROTECT ALL MONITORING WELLS (SOME ARE FLUSH MOUNT & SOME ARE PRO COVERS STICKING UP 3ft ABOVE GRADE)
- 3) WHERE FORMER BUILDINGS/STRUCTURES WERE, EXCAVATION CONTRACTOR MAY ENCOUNTER BROKEN CONCRETE FLOOR SLABS BELOW GRADE AS WELL AS EXISTING CONCRETE FOUNDATIONS & FOOTINGS



EXCAVATION AREA (S1)
10ft DEPTH = 1,427 cu.yd.
REMOVE & STOCKPILE TOP 4ft OF SOIL FROM THIS EXCAVATION FOR REUSE ON SITE

EXCAVATION AREA (S2)
3ft DEPTH = 73 cu.yd.

EXCAVATION AREA (S3)
3ft DEPTH = 133 cu.yd.

EXCAVATION AREA (S4)
3ft DEPTH = 128 cu.yd.

EXCAVATION AREA (S5)
2ft DEPTH = 56 cu.yd.

EXCAVATION AREA (S6)
2ft DEPTH = 72 cu.yd.

DRAWN BY	KJB
DESIGN BY	LMN
DATE	8/28/14
FILE NO.	623350_LM_BID
NO.	
REVISIONS	

**WOLVERINE WORLD WIDE/
WARNER, NORCROSS and JUDD**
FORMER TANNERY SITE, 123 MAIN ST, ROCKFORD, MI
REMEDIAL ACTION

ROSE & WESTRA
A DIVISION OF GZA
Grand Rapids, Michigan
GEOTECHNICAL-ENVIRONMENTAL-ECOLOGICAL-WATER-CONSTRUCTION MANAGEMENT

PROJECT NO.
16.0062335.01
SHEET NO.

8B

FORMER TANNERY SITE PLAN - EXCAVATION LIMITS (SOUTH OF RUM CREEK)

ISSUED FOR BID - NOT FOR CONSTRUCTION